

Resort Purpose land for sale near Bathery, Wayanad, Kerala...

Odappallam, Near Bathery, Wayanad ,673592

Property Details

Property Id : 957252

Property Type: Residential land

Road Accessibility:

Possession :

Plot Area : 125 Cent

Description

About Sultan Bathery : Bathery, also known as Sultan Bathery, is a town in the Wayanad district of Kerala, India. It is renowned for its rich history, scenic landscapes, and cultural significance... Sulthan Bathery is situated at an elevation of around 930 meters above sea level. It is well-connected by road to major cities in Kerala, Karnataka, and Tamil Nadu. It serves as a gateway to Wayanad for travelers coming from Mysore or Bangalore. Connectivity: Road: It is well-connected to Kozhikode, Mysore, Ooty, and Bangalore.... Rail: The nearest major railway station is in Kozhikode (Calicut), around 100 km away... Air: The closest airport is the Calicut International Airport, located about 102 km from Sulthan Bathery... Property Details : Land Area: 1 acre 25 cents. Water Source: Open well. Cultivation: Includes some fruit trees and bananas. Accessibility: Concrete road and electricity available. Potential Use: Ideal for resort development. For further details, feel free to contact!. Location – Odappallam, Near Bathery, Wayanad, Kerala... Main Distance : 5.5 km from Sulthan Bathery. 39.5 km from Vythiri. 99.5 km from Calicut Railway Station. 101 km from Calicut International Airport. 120.5 km from Mysore. 230 km from Bangalore. Asking Price: 70 lakh Per Acre.... Contact: 9656866955 For more details, feel free to get in touch!

Contact Details

Parrotrealty
9656866955

+91 4935 222 888 

+91 9656 866 955 

www.parrotrealty.com 

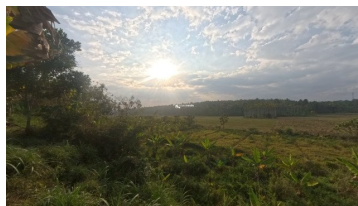
parrotrealtyservices@gmail.com 

2nd Floor, Amrutheswari Complex, Panamaram 



parrotrealty@yahoo.com

Property Media



+91 4935 222 888



+91 9656 866 955



www.parrotrealty.com



parrotrealtyservices@gmail.com



2nd Floor, Amrutheswari Complex, Panamaram

