



## Hill view property for sale near Padinjarathara, Wayanad.

near Padinjarathara, Padinjarathara, Wayanad ,673575

### Property Details

Property Id : 376437

Property Type: Residential land

Road Accessibility:

Possession :

Plot Area : 156 Cent

### Description

About Padinjarathara : Padinjarathara is a village located in the Wayanad district of Kerala, India. It is known for its serene natural beauty, lush greenery, and close proximity to significant tourist attractions. Padinjarathara is famous for the Banasura Sagar Dam, the largest earthen dam in India and the second largest in Asia. Padinjarathara is well-connected by road, making it accessible from major cities like Kozhikode (Calicut) and Mysore. Property Details : Land Area: 1 acre 56 cents . Location: Near Padinjarathara, Wayanad. Features: Well-suited for use as a resort or homestay due to its scenic location and accessibility. Presence of some trees. Panchayath concrete road frontage. Distances from Key Locations: Padinjarathara: 5 km. Mananthavady: 21 km. Kalpetta: 23 km. Bathery (Sultan Bathery): 45 km. Kannur International Airport: 80 km. Calicut International Airport: 96 km. Mysore: 133 km. Bangalore: 271 km. Asking Price: ₹65,000 per cent... Contact Information: For further details, contact 9656866955.

### Contact Details

Parrotrealty  
9656866955  
parrotrealty@yahoo.com

+91 4935 222 888 

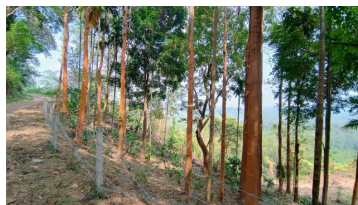
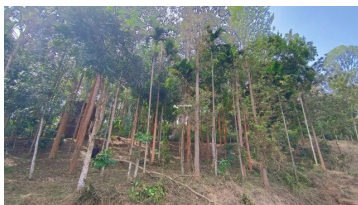
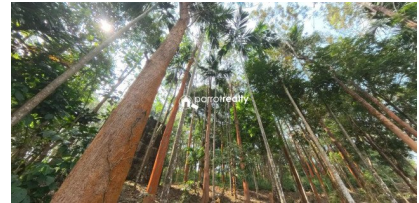
+91 9656 866 955 

www.parrotrealty.com 

parrotrealtyservices@gmail.com 

2nd Floor, Amrutheswari Complex, Panamaram 

## Property Media



+91 4935 222 888



+91 9656 866 955



[www.parrotrealty.com](http://www.parrotrealty.com)



[parrotrealtyservices@gmail.com](mailto:parrotrealtyservices@gmail.com)



2nd Floor, Amrutheswari Complex, Panamaram

