

## Residential Land for Sale at Nechoor, Ernakulam..

Nechoor, Ernakulam, Ernakulam ,686664

### Property Details

Property Id : 121070

Property Type: Residential land

Road Accessibility:

Possession :

Plot Area : 18 Cent

### Description

Land area : 18 Cents.. A rectangular residential land is available for sale in Nechoor, Ernakulam. The plot is conveniently located just 3 kilometers away from Piravom town, making it easily accessible for residents. Situated along the roadside, this prime piece of real estate offers great potential for development and construction. Its close proximity to Piravom town ensures easy access to essential amenities such as Church, temple, schools, hospitals, and shopping centers. The surrounding area is known for its peaceful and scenic environment, providing a relaxing setting for residents. With its strategic location, the land presents an excellent opportunity for building a dream home or investment property. This property is equipped with a reliable well for water supply throughout the year, ensuring constant access to fresh water. Electricity and KWA water connection are available, providing convenient and essential utilities for daily living. The presence of a small storage house offers extra space for storing tools, equipment, or seasonal items. All the essential amenities and premium facilities are available. Located in a calm and tranquil area, the property provides a serene environment away from the hustle and bustle of city life. Asking Price : 2.3 Lakhs per cent (Slightly Negotiable) Contact : Lija 9947225973.... Email ID : lija1511@gmail.com.

### Contact Details

Lija  
lija1511@gmail.com

+91 4935 222 888 

+91 9656 866 955 

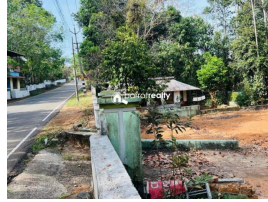
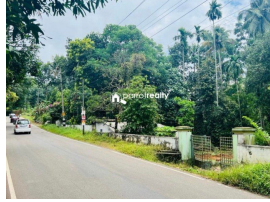
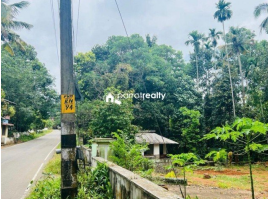
www.parrotrealty.com 

parrotrealtyervices@gmail.com 

2nd Floor, Amrutheswari Complex, Panamaram 

9947225973

## Property Media



+91 4935 222 888



+91 9656 866 955



[www.parrotrealty.com](http://www.parrotrealty.com)



[parrotrealtyservices@gmail.com](mailto:parrotrealtyservices@gmail.com)



2nd Floor, Amrutheswari Complex, Panamaram

