

## 35000 Sq Ft Warehouse for Rent in Palakkad

Malampuzha, Palakkad, Palakkad ,678651

### Property Details

Property Id : 714227

Property Type: Commercial Building

Road Accessibility:

Possession :

### Description

Ware house For rent – Palakkad 25000 Sq ft / 10000 Sq ft / 6000 Sq ft – suitable for FM CG / Garments / storage – Location– 8 KM from Palakkad Town , On Malampuzha Bye pass Road next to new IIT campus and Augustin Colours, 1.5 KM from Coimbatore–Cochin highway. Carpet area– RC Roof , workmen stay area 2 sets of Toilet block each with 3 Toilets and one bathroom Of which 12000sq ft is RC roof 12 ft height and balance 13000 Sq ft asbestos roofing height 15ft and centre 24 ft. Floor– Industrial dewatered Shutters–3 nos with Canopy On the Malampuzha bye pass road. Container movement and destuffing available. Rate per sq ft–Rs.12/Sq ft Security deposit– 6 months rent. Other amenities: Ample truck parking space,Office blocks,Toilet blocks,Malampuzha water connection as well as bore well. Asking Price :- 420000/Month

### Contact Details

Vijayan

vijayan.9843081640@parrotrealty.com

9843081640

### Property Media

+91 4935 222 888



+91 9656 866 955



www.parrotrealty.com

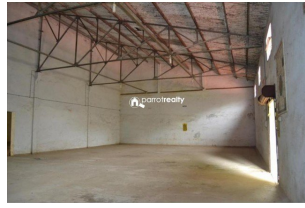


parrotrealtyservices@gmail.com



2nd Floor, Amrutheswari Complex, Panamaram





+91 4935 222 888



+91 9656 866 955



[www.parrotrealty.com](http://www.parrotrealty.com)



[parrotrealtyservices@gmail.com](mailto:parrotrealtyservices@gmail.com)



2nd Floor, Amrutheswari Complex, Panamaram

